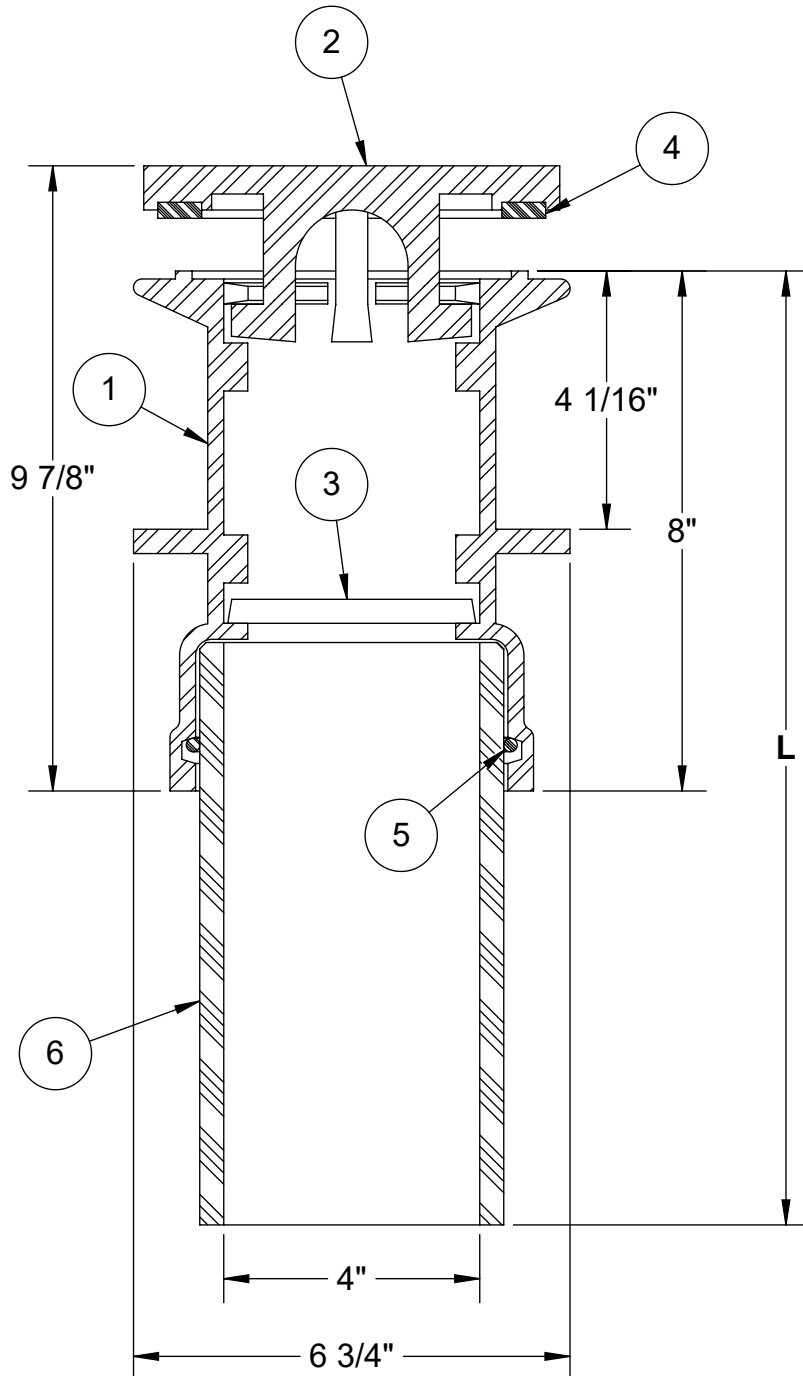


ITEM	DESCRIPTION	QTY.	MAT'L
1	Body	1	SS
2	Cover	1	SS
3	Grate	1	SS
4	Cover Ring	1	BUNA-N
5	O-Ring	1	BUNA-N
6*	Extension	1	PVC C900



Notes:

- Stainless Steel to Resilient Seat
- \* Valves extended as needed with C900 PVC to any required length
- Begins to open at ~ 9" of unseating head differential
- Cover lifts 1" in position
- Cover with rubber is 13/16" thick

☐ 304SS

☐ 316SS

L = \_\_\_\_\_

L is the OAL from seat.

