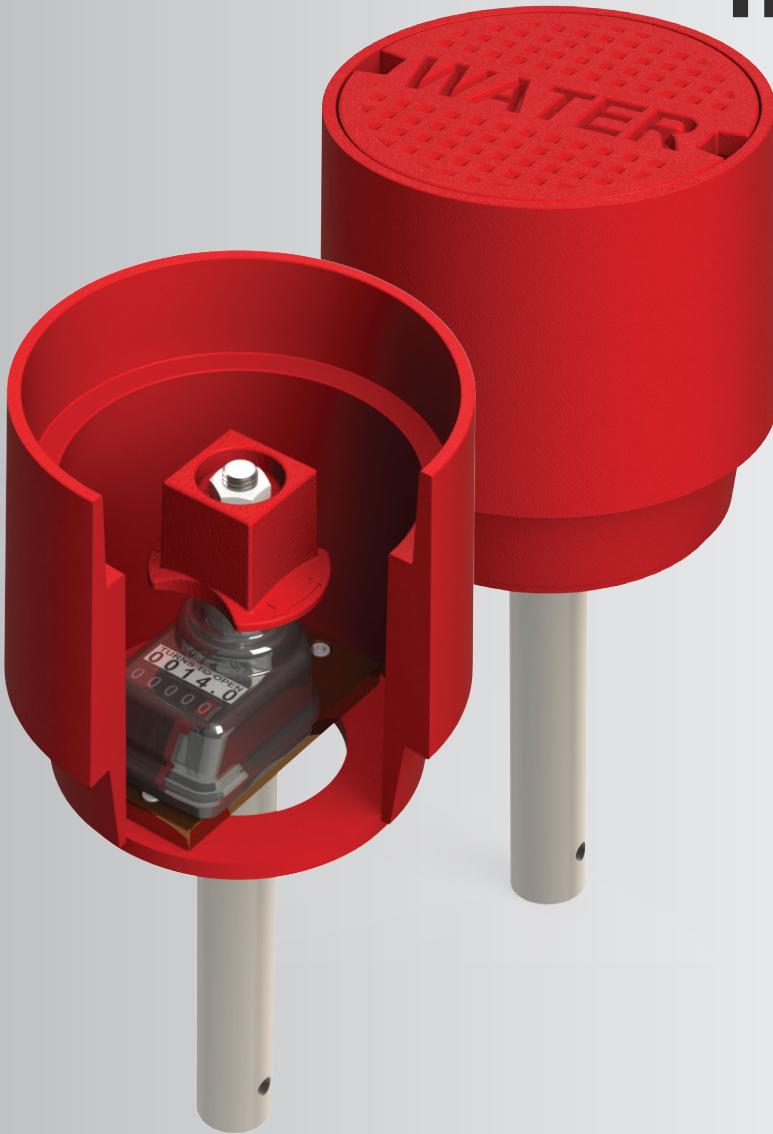


The New Troy Valve Position Indicator

Always know your valve position!



PRODUCT FEATURES

1. Indicates up to 9,999.9 turns
2. Easy to read numbers on a mechanical readout
3. Highly accurate within 1/10th of a turn
4. Available in open left or right
5. Water resistant housing with stainless components
6. Can be mounted on stem guides, floor stands, or in a floor box.
7. One size fits all

800.232.4442
sales@troyvalve.com



MADE IN THE USA

Position Indicator Specifications

- ▶ The indicator shall be supplied as an assembly consisting of a valve box adaptor, an indicator, and an operating stem adaptor.
- ▶ The indicator shall be of a mechanical readout, dial indicators shall not be accepted.
- ▶ The body of the indicator shall be a shock proof, self extinguishing technopolymer case, and meet IP64 standards. The indicator shall be capable of temperatures up to 80°C.
- ▶ The indicator shall be encased in a transparent silicon casing which extends over the extension stem to ensure no water can penetrate the indicator where the operating stem attaches to the indicator bushing.
- ▶ The indicator shall be capable of reading from 0 to 9,999 turns.
- ▶ Turns to open shall be indicated by a label next to the digital read out. The label shall be replaceable in the event that the indicator is used for a different valve.
- ▶ The valve box adaptor shall have a hole large enough to fit a 2" square socket through it so that the extension's stem can be added or removed without removing the valve box adaptor.
- ▶ The valve position indicator assembly shall be machined, assembled, and tested in the USA for quality assurance.
- ▶ The manufacturer shall show proof of ISO 9001:2008 certification.
- ▶ Where required, the manufacturer shall provide valve operating stems, floor stands, and stem guides as specified in the valve schedule or plans.
- ▶ Valve position indicator and accessories shall be manufactured by Troy Valve Model API_OP9FB or approved equal.

Troy Valve position indicators are designed to let valve operators know precisely what position their valve is in, regardless of the industry or application. No more wondering if the valve is fully open yet or if you have turned it enough to close it. You no longer need to struggle to see small hash marks to determine how many turns you made. Troy Valve's easy to read numerical readout makes it easy to see the valve's current position.

The position indicator is customizable and can be mounted in a floor box, on a stem guide, or even on a floor stand to give users the ability to see their progress no matter what the arrangement of their accessories is.

Worried about water? We have developed a protective boot to make the indicator water and dirt resistant. A combination of stainless steel and plastic parts make this one of the most durable position indicators available today. What sets this indicator apart is the flexibility this unit provides. You can use the same indicator on a valve that requires only one turn or a valve that takes up to 9,999 turns. The only thing needed is a sticker indicating the number of turns required to open the valve placed on the indicator. This sticker is then covered with the indicators protective boot so there is no need to worry about it ever separating from the unit.

Remember us for all of your valve accessory needs, from extension stems and stem guides, to floor boxes and floor stands. Troy Valve, Manufacturing quality ... Manufacturing trust.



www.troyvalve.com